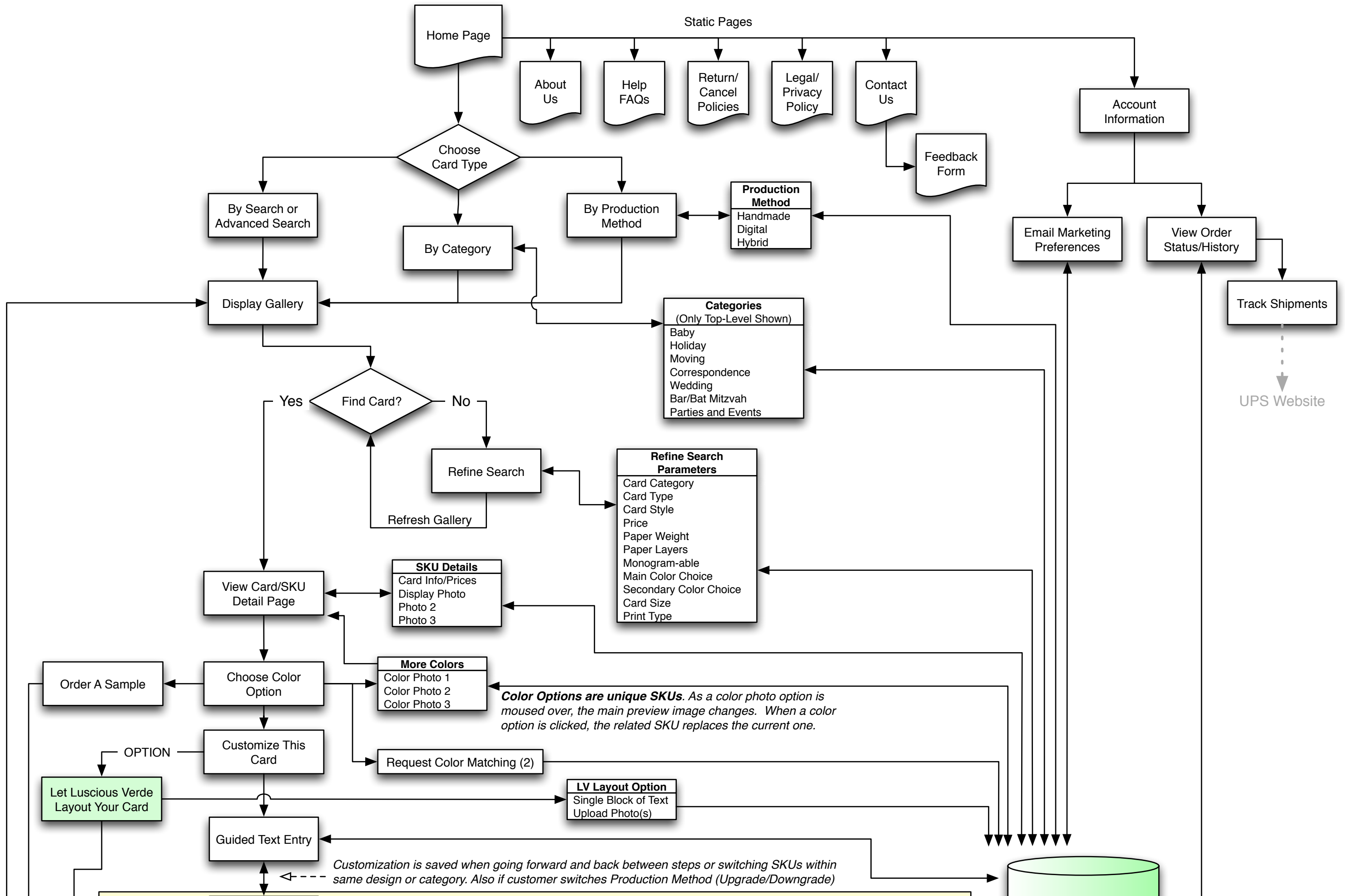
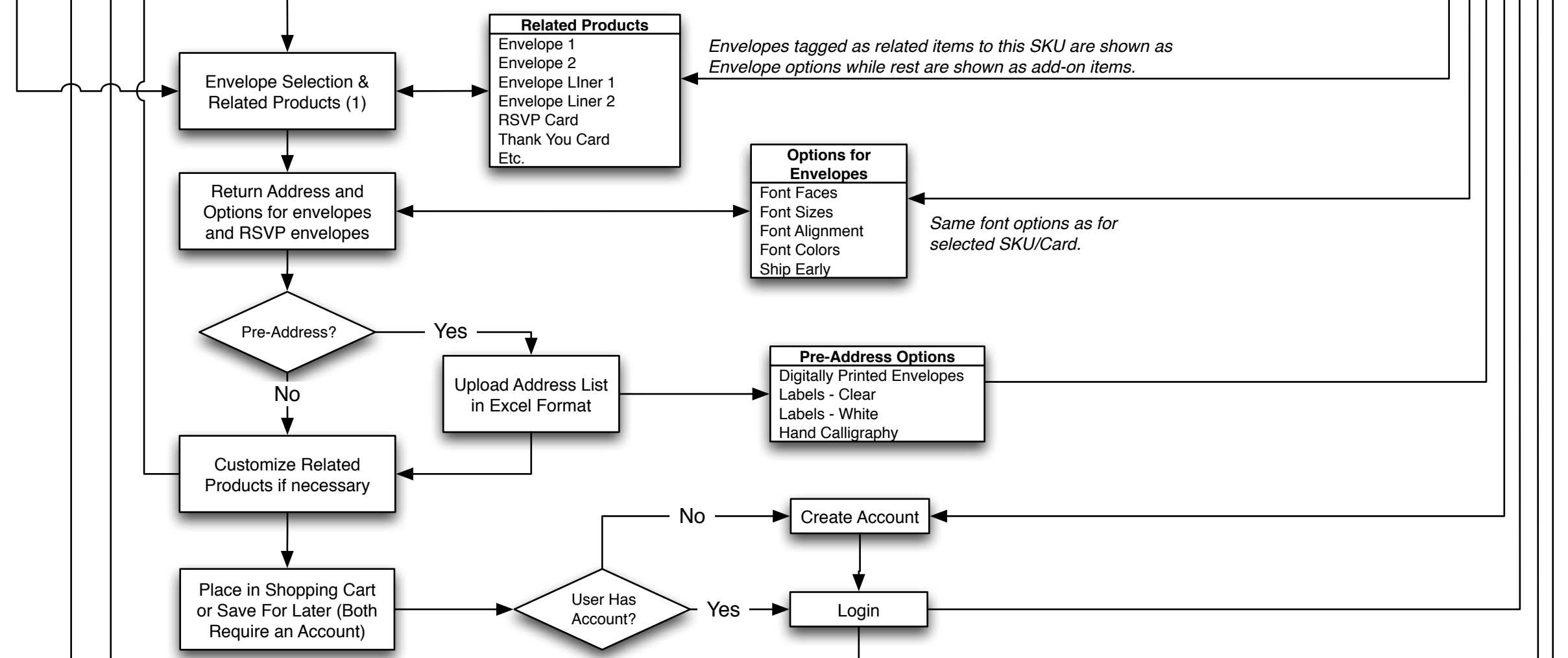
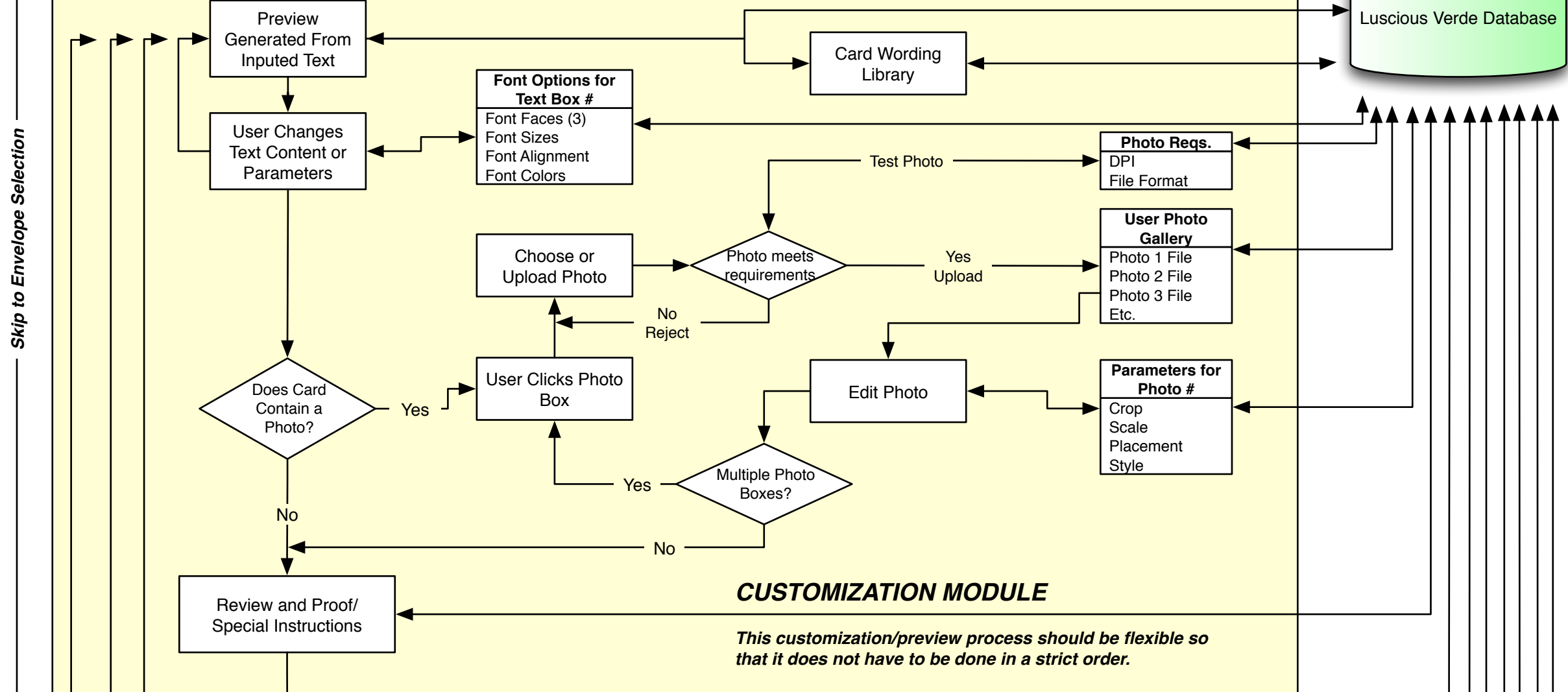
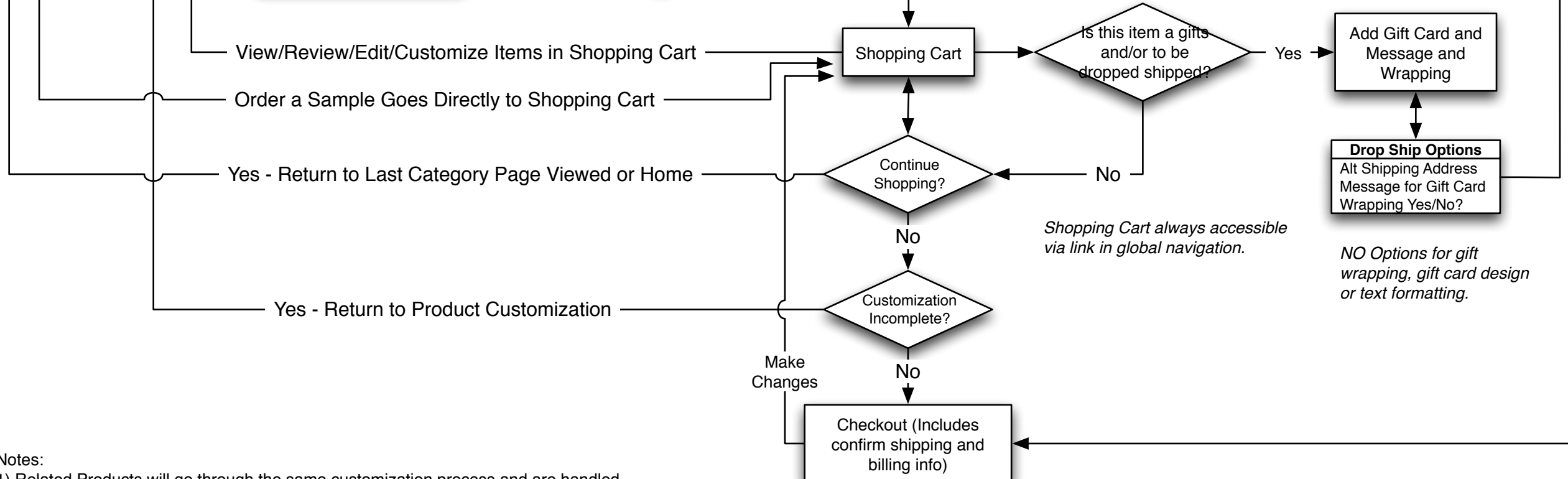


Luscious Verde Online Store
Front End System Diagram







Shopping Cart always accessible via link in global navigation.

NO Options for gift wrapping, gift card design or text formatting.

- Notes:
- 1) Related Products will go through the same customization process and are handled as unique products.
 - 2) Color Match Request: Option at Product Detail page near "Color Options" which display pop-up message with instructions and info (delay of order, requirements, extra costs). **WHAT IS THE PROCESS AT THIS POINT?** Is the matched paper sample sent back to the customer before proceeding or do you just do it based on your expertise? Handled via system or over phone? How noted on order? Or do they usually just call at that point rather than use web store?
 - 3) Font Faces - "Faces" refers to both family and style. E.g. Helvetica and Helvetica Bold are 2 different faces.

Global Options:

Save Project: Customized cards created by visitors who are not logged in or do not have an account are stored in a temporary file. When "Save Project for Later" or "Add to Shopping Cart" are selected, the visitor is asked to login or register, at which point the temporary file is moved to the users account.

Order Sample: Circumvents customization process and places sample the SKU for the Sample version of the product in the shopping cart and directs the user to the shopping cart.

