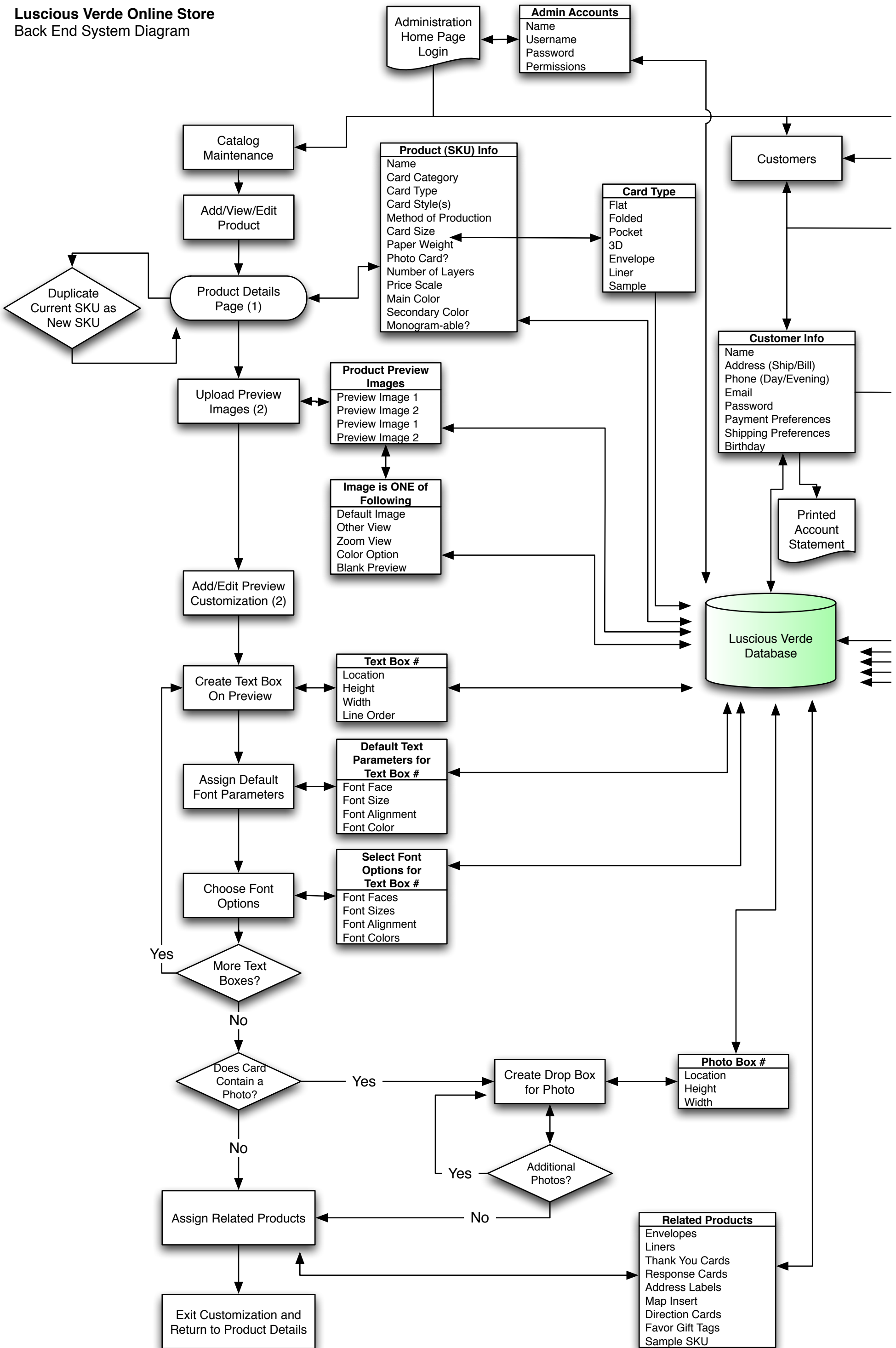
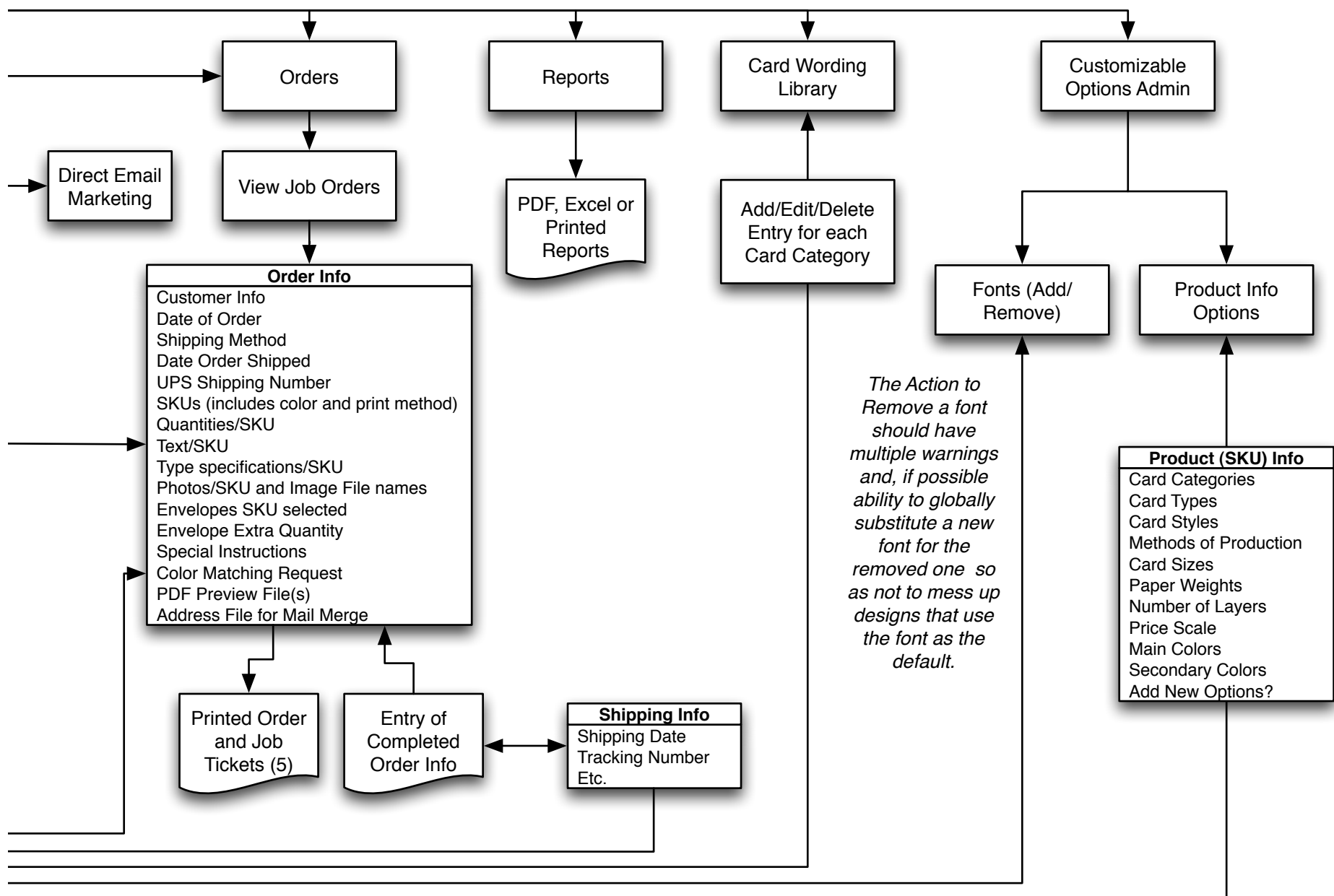


**Luscious Verde Online Store**  
Back End System Diagram





**Notes:**

1. Product Details (name, size, description, prices and quantities) is entered in standard product entry form or by batch process.

2. A blank preview is needed to overlay customized text on. If a preview customization is added to a preview image, then it is not shown in the "other views" gallery on the product detail page. This utilizes the same image upload for the both previews and customization images. Must be able to assign a SKU to preview Images tagged as "Color Option" since each color option of the same design is a separate SKU.

3. Envelopes are entered as separate products tagged as the Card Type of "envelopes" which can be chosen as related products. Then they are in displayed on the front end customization process when needed. If envelope size is non-standard, display "additional postage" warning.

4. If a Card Type is "envelope" a slightly different customization process is needed. No photos. Text boxes will need to assume font options from the main card selected. "Liners" have no customization options. A single envelope SKU may be assigned to an unlimited number of Cards/SKUs with different text parameters.

5. Order and Job Tickets: Order lists all pieces in the order by SKUs. For each SKU, there is a Job Ticket so each component of the order can be handed to the appropriate staff person to process.